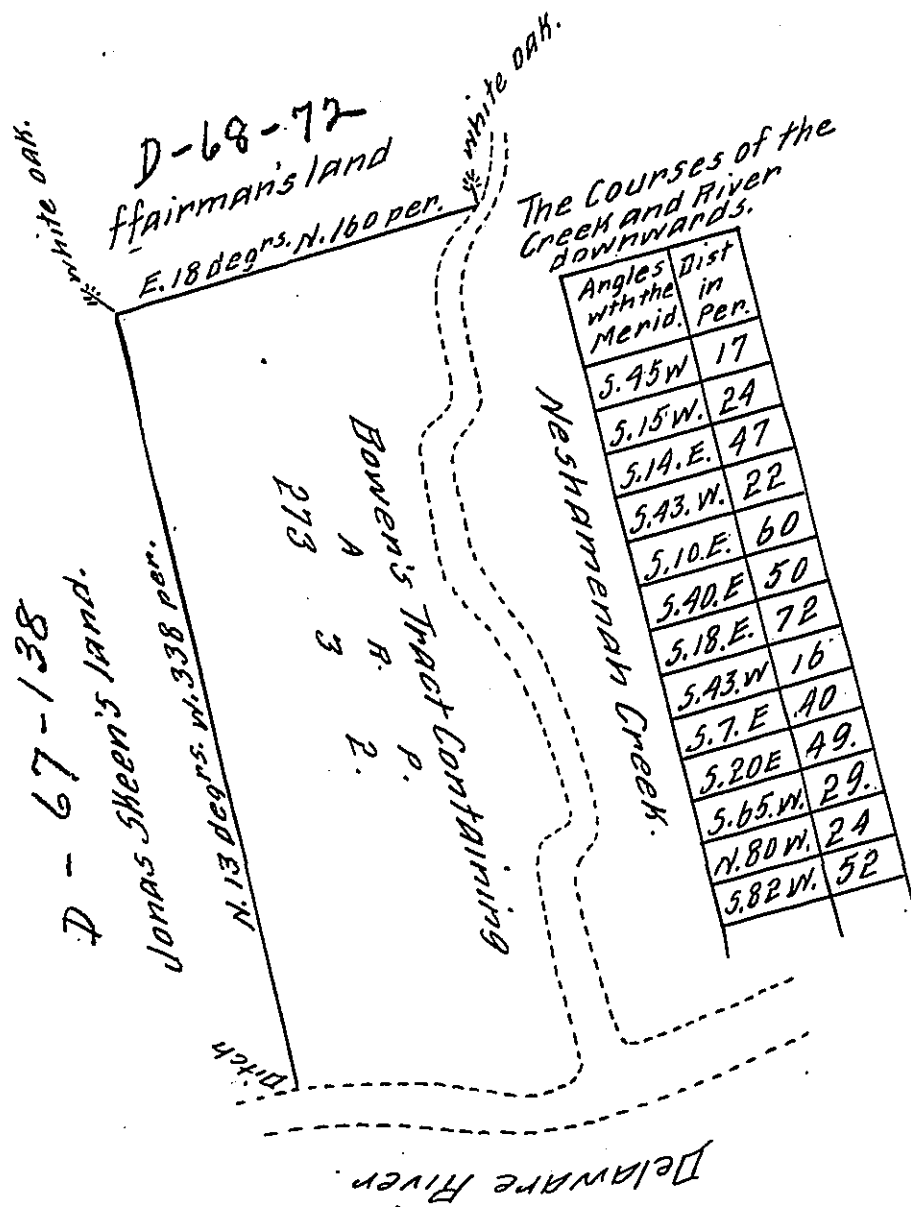


(see pg. 180
for Return)



Resurveyed the 24th day of the 1st month 170 $\frac{1}{2}$ by virtue of a Warrt. from the Com^{rs}. of Property dated the 21st of the 11th month 1701 unto Joseph Growdon a Tract laid out for John Bowen in Bensalem Township. Containing 273^A. 3^R. 2^P. Beginning at a Ditch by the River Delaware. Thence by Jonas Sheen's line N. 13 degrs. W. 338 perches to a white oak. Then E. 18 degrs. N by Fairman's line 160 perches to a white oak by a Rock at Neshameneh Creek. Then down the several Courses of the said Creek to the mouth thereof. Then down the several Courses of the River Delaware to the place of beginning.

Resurveyed by me John Cutler.

IN TESTIMONY that the above is a copy of the original remaining on file in the Department of Internal Affairs of Pennsylvania, made conformably to an Act of Assembly approved the 16th day of February, 1833, I have hereunto set my Hand and caused the Seal of said Department to be affixed at Harrisburg, this sixth day of MAY 1909-

Henry Hoack
Secretary of Internal Affairs.